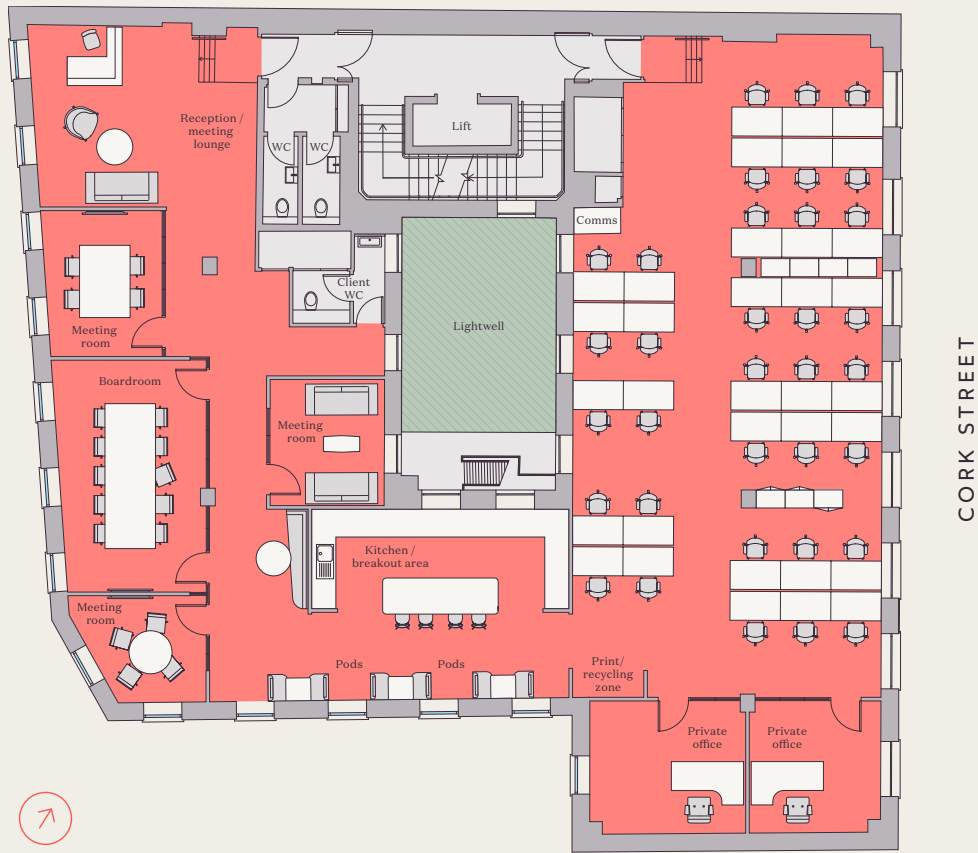


# 10 CORK ST.

*Magnolia*

## 1ST FLOOR

3,804 SQ FT (353.4 SQ M)



CORK STREET



N

CORK STREET MEWS

FULLY FITTED, BOUTIQUE OFFICES,  
READY TO MOVE IN.

1:10	36	34	2	3	1
Occupational density	Total headcount	Open plan desks	Private offices	Meeting rooms (4-6 person)	Boardroom (10 person)
3	1	1	1	1	1
Breakout pods	Kitchen / breakout area	Reception	Demised client WC (2 staff WCs)	Print/recycling zone	Comms cabinet

# 10 CORK ST.

*Magnolia*

## 2<sup>ND</sup> FLOOR

3,846 SQ FT (357.3 SQ M)



N

CORK STREET MEWS

FULLY FITTED, BOUTIQUE OFFICES,  
READY TO MOVE IN.

1:10	36	34	2	3	1
Occupational density	Total headcount	Open plan desks	Private offices	Meeting rooms (4-6 person)	Boardroom (10 person)
3	1	1	1	1	1
Breakout pods	Kitchen/breakout area	Reception	Demised client WC (2 staff WCs)	Print/recycling zone	Comms cabinet